



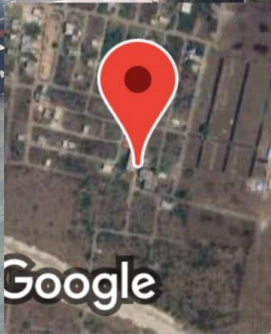
7.1.2 The Institution has facilities and initiatives for

- 1. Alternate sources of energy and energy conservation measures**
- 2. Management of the various types of degradable and nondegradable waste**
- 3. Water conservation**
- 4. Green campus initiatives**
- 5. Disabled-friendly, barrier free environment**




 **GPS Map Camera**

Nagpur, Maharashtra, India
63HQ+3H9, Nagpur, Maharashtra 440026, India
Lat 21.227562°
Long 79.089111°
02/07/23 12:42 PM GMT +05:30





 **GPS Map Camera**



Nagpur, Maharashtra, India

63HQ+3H9, Nagpur, Maharashtra 440026,
India

Lat 21.227522°

Long 79.089088°

02/07/23 12:44 PM GMT +05:30



 **GPS Map Camera**

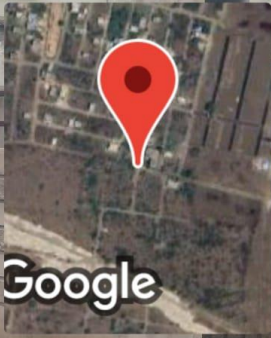
Nagpur, Maharashtra, India

63HQ+3H9, Nagpur, Maharashtra 440026, India

Lat 21.227276°

Long 79.089032°

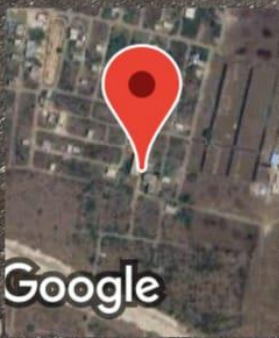
02/07/23 12:45 PM GMT +05:30



Google



 **GPS Map Camera**



Nagpur, Maharashtra, India


63HQ+3H9, Nagpur, Maharashtra 440026,
India

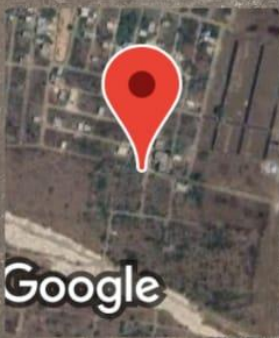
Lat 21.227562°

Long 79.089111°

02/07/23 12:43 PM GMT +05:30



 **GPS Map Camera**



Nagpur, Maharashtra, India

63HQ+3H9, Nagpur, Maharashtra 440026,
India

Lat 21.227266°

Long 79.088961°

02/07/23 12:49 PM GMT +05:30